



HYSF Built to Last Underwater

Xiamen Cuida Technology Co., Ltd.

www.hysfsubsea.com



01 Company Overview

02 Industry Applications

03 Manufacturing Process

04 Product Classification & Models

科创新



HYSF SUBSEA

Xiamen Guida Technology Co., Ltd.

HYSF SUBSEA was founded in 2016. We are a high-tech enterprise dedicated to the R&D, manufacturing, and global distribution of deep-sea interconnect components and watertight connection systems.

Core Competencies & Innovation

- **Import Substitution:** Through independent technological innovation, we have successfully challenged international monopolies, providing high-performance domestic alternatives to global brands.
- **Custom Engineering:** We offer full-service customization—from initial design and technical drawing to final production—tailored to meet specific client requirements.
- **Premier Industry Standing:** HYSF is recognized as a leader among Chinese manufacturers in the subsea connector industry.

Qualifications & Quality Assurance

We operate under a complete and scientific quality management system, supported by:

- **Official Certifications:** National High-Tech Enterprise, Science & Technology SME of Hebei Province, and Grade I Certificate in the China Technology Industry.
- **R&D Strength:** Holder of over 10 utility model patents.
- **Advanced Facilities:** Equipped with dozens of state-of-the-art production units and precision testing instruments.

Company Overview



Product Portfolios & Applications (2016 – Present)

Our R&D team has integrated the strengths of leading global products to develop a robust series of:

- Enhanced Watertight Connectors (Electrical & Optoelectronic)
- Underwater Lighting & Cameras
- Submersible Diving Equipment

Key Application Fields: Marine Research, Oil & Gas Drilling, ROVs (Remotely Operated Vehicles), Environmental Monitoring, Defense & Naval Operations, Aquaculture, Subsea Sightseeing, Aerospace, and Underwater Salvage.

Distinguished Clientele: Our global client base includes oceanographic research institutes, defense contractors, shipyards, environmental agencies, the Chinese Academy of Sciences (CAS), CSIC (China Shipbuilding Industry Corporation), and prestigious universities worldwide.

Corporate Qualifications



I. Enterprise Designations

Certified Technology Enterprise: Officially recognized as a "Technology Enterprise" in 2024, reflecting our commitment to advanced R&D and industrial innovation.

Specialized Small & Micro Enterprise: Accredited for our specialized focus and agility in the subsea technology sector.

II. Intellectual Property

Patents: Holder of 10+ national patents, driving the evolution of watertight interconnect technologies.

Brand Assets: 9 registered trademarks and 1 technical copyright, securing our proprietary designs and global brand identity.

Corporate Qualifications



III. Quality Management & Standards

ISO 9001 Certification: Fully compliant with the ISO 9001 Quality Management System for consistent manufacturing excellence.

GJB 9001C-2017 Standards: Our production processes strictly adhere to the GJB 9001C-2017 (National Military-grade Quality Standard).

Mission-Critical Reliability: Delivering a proven 99.98% product reliability rate, engineered for the most demanding deep-sea environments.

HYSF SUBSEA



Corporate Qualifications



Strategic Certification: Building trust through global industry standards.

Technical Innovation: Driving growth through proprietary R&D and differentiation.

Market Leadership: Cultivating a strong brand influence in the deep-sea sector.



R&D Milestones & Patents



Core R&D & Application Sectors



I. Deep-Water Connector Technology

Specialized Expertise: Focused on the R&D of deep-sea sealed interconnects and underwater electronic components.

Advanced Manufacturing: Supported by state-of-the-art production equipment and a comprehensive, precision-driven testing system.

High-Pressure Performance: Our self-developed deep-water series is engineered to withstand pressures up to 6,000 meters (60MPa).

Global Compatibility: Our products match international standards for sealing and mechanical reliability, featuring full interface interchangeability with leading global brands.

II. Subsea Equipment Integration & Services

We provide high-performance deep-water communication solutions for a wide range of sophisticated equipment:

Core Systems: ROVs (Remotely Operated Vehicles), Sonar Systems, and Hydrophones.

Mission-Critical Reliability: Engineered to meet the rigorous demands of deep-sea exploration and subsea rescue operations.

Core R&D & Application Sectors



III. Key Industry Applications

Our solutions are trusted across diverse sectors, including:

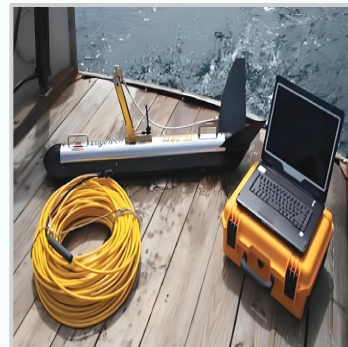
Marine Research: Advancing oceanographic scientific discovery.

Defense & Naval Equipment: Providing secure and robust connectivity for military operations.

Environmental Monitoring: Supporting sustainable ocean management and data collection.



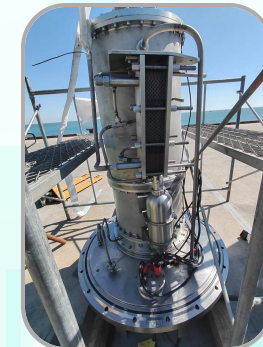
ROV



Sonar Systems



Submersible



Pressure Hull

Quality Assurance & Pre-Shipment Testing

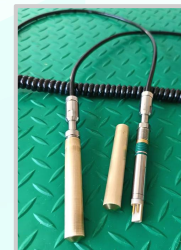
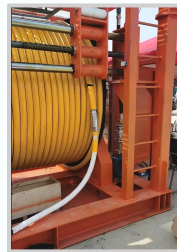


Test Item	Equipment	Procedure & Standard	Pass Criteria
Hydrostatic Pressure Test	100MPa High-Pressure Pump	Install the connector base into a pressure vessel. Seal the cable tail and mate with a test lead to monitor electrical integrity. Pressurize the water-filled vessel to the target level and maintain for 60 minutes.	No leakage or structural deformation.
Dielectric Withstand Test (Hipot)	Voltage Withstand Tester	Apply 1000V AC/DC between individual pins and between the pins and the metal shell.	Leakage current < 10mA.
Insulation Resistance (IR) Test	Insulation Resistance Tester	Apply 1000V across all contacts and the connector housing to verify material and sealing integrity.	Resistance > 200MΩ.
Dynamic Continuity Test	Precision Resistance Tester	Connect the cable assembly to the tester. Monitor real-time resistance data while performing a vigorous manual "shake test" on the cable and joint.	Stable readings without significant fluctuation.

Market Expansion & Customization Capabilities



HYSF SUBSEA has built a prestigious clientele by partnering with industry leaders such as the Chinese Academy of Sciences (CAS), CSIC, and various national defense and marine research institutes. Our product line offers exceptional versatility, featuring 2-to-42 pin configurations that support high-speed Ethernet and hybrid power/signal transmission. By combining this extensive range with our bespoke engineering services, we deliver tailored, high-performance connectivity solutions that meet the most rigorous demands of global maritime and industrial sectors.



Product Architecture & Manufacturing Process



I. System Composition

Our watertight connector systems consist of two primary components: the Bulkhead Connector (Receptacle) and the Cable Plug, forming a complete interconnected set.

Deep-Sea Performance: Designed for sustained operations at depths up to 6,000 meters.

Wet-Mateable Technology: Engineered for reliable underwater mating and unmating (connecting/disconnecting while submerged).

HYSF SUBSEA

II. Bulkhead Connector

Material Composition: Features a high-performance blend of 316L Stainless Steel, Marine Bronze, or Titanium Alloy, combined with Neoprene through a High-Temperature Vulcanization process for unibody molding.

Precision Internal Wiring: Utilizes high-temperature silver-plated wires connected to gold-plated terminals for superior conductivity.

Sealing & Insulation: Designed to work seamlessly with O-rings; tested at 60MPa (6,000m depth) with zero leakage.

Electrical Integrity: Insulation resistance reaches 200MΩ at 1000V.

Product Architecture & Manufacturing Process



III. Cable Assembly

Water-Blocking Cables: Utilizes advanced transverse and longitudinal water-blocked twisted-pair shielded cables to prevent water ingress.

Robust Construction: Cables are integrated with gold-plated terminals and molded with Neoprene via high-temperature vulcanization.

Precision Locking Sleeves: Locking nuts/caps are CNC-machined from POM (Delrin), 316L Stainless Steel, or Titanium Alloy for maximum mechanical durability.





01 Micro Watertight Connectors

The cable and contacts are integrated through high-temperature vulcanization to form a unibody construction. Featuring wet-mateable technology, these connectors are fully interchangeable with leading domestic and international brands. Their compact, lightweight design ensures rapid deployment and ease of installation. They are widely applied in diving equipment, torpedoes, underwater rescue operations, and subsea imaging/lighting systems.



Product Series	Micro Series: 2–8 Pins (MCBH)	SKU:	MCBH	Mounting Thread	7/16-20UNF
	Right Angle: 2–8 Pins (MCBHRA)		MCBHRA		7/16-20UNF
	Oil-Filled: 2–8 Pins (SFMCPBOF)		SFMCPBOF		
Rated Voltage	550 (V)AC/DC	Rated Current:	22–4 Pins: 10A	Pressure Rating	60MPa
Insulation Resistance	≥1000V 200MΩ	Operating Temp.	-60-80°C	Mating Cycles	≥500次
Standard Kit	Bulkhead Connector: 316L Stainless Steel (30cm pigtail, includes Nut/Washer/O-ring) Cable Plug: 90cm–1m cable length				

01 Micro Watertight Connectors



The cable and contacts are integrated through high-temperature vulcanization to form a unibody construction. Featuring wet-mateable technology, these connectors are fully interchangeable with leading domestic and international brands. Their compact, lightweight design ensures rapid deployment and ease of installation. They are widely applied in diving equipment, torpedoes, underwater rescue operations, and subsea imaging/lighting systems.



Product Series	Micro: 10–16 Pins (MCBH)	SKU:	MCBH	Mounting Thread	1/2-20UNF
	Right Angle: 10–16 Pins (MCBHRA)		MCBHRA		1/2-20UNF
	Oil-Filled: 10–16 Pins (SFMCPBOF)		SFMCPBOF		
Rated Voltage	550 (V)AC/DC	Rated Current:	5A	Pressure Rating	60MPa
Insulation Resistance	≥1000V 200MΩ	Operating Temp.	-60-80°C	Mating Cycles	≥500次
Standard Kit	Bulkhead Connector: 316L Stainless Steel (30cm pigtail, includes Nut/Washer/O-ring) Cable Plug: 90cm–1m cable length				

01 Micro Watertight Connectors



The 21-pin and 25-pin models are high-demand standard products that are fully interchangeable with leading global brands, making them the ideal choice for equipment requiring high-density signal integration or multi-channel connectivity in space-constrained environments.



Product Series	Micro: 21 Pins (MCBH)	SKU:	MCBH	Mounting Thread	5/8-18UNF
	Micro: 25 Pins (MCBH)		MCBH		3/4-16UNF
Rated Voltage	550 (V)AC/DC	Rated Current:	21Pin 5A 25Pin 10A, 22Pin 5A	Pressure Rating	60MPa
Insulation Resistance	≥1000V 200MΩ	Operating Temp.	-60-80°C	Mating Cycles	≥500次
Standard Kit	Bulkhead Connector: 316L Stainless Steel (30cm pigtail, includes Nut/Washer/O-ring) Cable Plug: 90cm–1m cable length				

02 Circular Mini Watertight Connecto



The Circular Mini Watertight Connector is an independently developed, cost-effective solution designed to be more compact and lightweight than standard MCBH connectors. It supports reliable wet-mating, offering exceptional ease of use and simple installation for applications such as diving equipment, torpedoes, underwater rescue, and subsea imaging or lighting systems.



Product Series	Circular Mini 2-6 Pin Series	SKU:	SFYX	Mounting Thread	3/8-24UNF
Rated Voltage	550 (V)AC/DC	Rated Current:	2-4Pin 5A 5-6Pin 3A	Pressure Rating	60MPa
Insulation Resistance	≥1000V 200MΩ	Operating Temp.	-60-80°C	Mating Cycles	≥500次
Standard Kit	Bulkhead Connector: 316L Stainless Steel (30cm pigtail, includes Nut/Washer/O-ring) Cable Plug: 90cm-1m cable length				

03 Ultra-Mini Watertight Connector



The Ultra-Mini Watertight Connector is an independently developed product characterized by its compact size, lightweight design, and space-saving efficiency, making it the perfect solution for confined spaces or applications with extremely small mounting aperture requirements. Please note that this series does not support wet-mating. It is primarily utilized for underwater signal transmission and subsea operations.

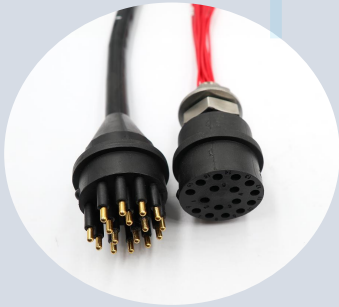
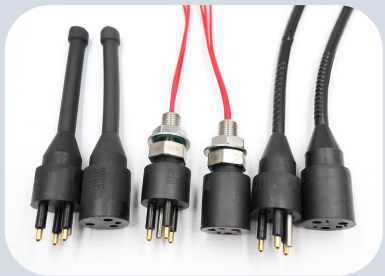


Product Series	Ultra-Mini 2-6 Pin (SFCX)	SKU:	SFCX	Mounting Thread	5/16-24UNF
	Right Angle 2-6 Pin (SFCXRA)		SFCXRA		5/16-24UNF
	Ultra-Mini 6-16 Pin (SFCXZ)		SFCXZ		3/8-24UNF
	Ultra-Mini 12-28 Pin (SFCXD)		SFCXD		1/2-20UNF
Rated Voltage	550 (V)AC/DC	Rated Current:	2A-5A	Pressure Rating	60MPa
Insulation Resistance	≥1000V 200MΩ	Operating Temp.	-60-80°C	Mating Cycles	≥500次
Standard Kit	Bulkhead Connector: 316L Stainless Steel (30cm pigtail, includes Nut/Washer/O-ring) Cable Plug: 90cm-1m cable length				

04 Standard Watertight Connector Series



The Standard Watertight Connectors are high-performance electrical connection solutions specifically engineered for subsea environments. Featuring exceptional sealing, corrosion resistance, and high-pressure durability, they are widely utilized in underwater robotics (ROVs/AUVs), marine exploration equipment, and offshore energy sectors. These series are fully compatible and interchangeable with leading domestic and international brands in the industry.

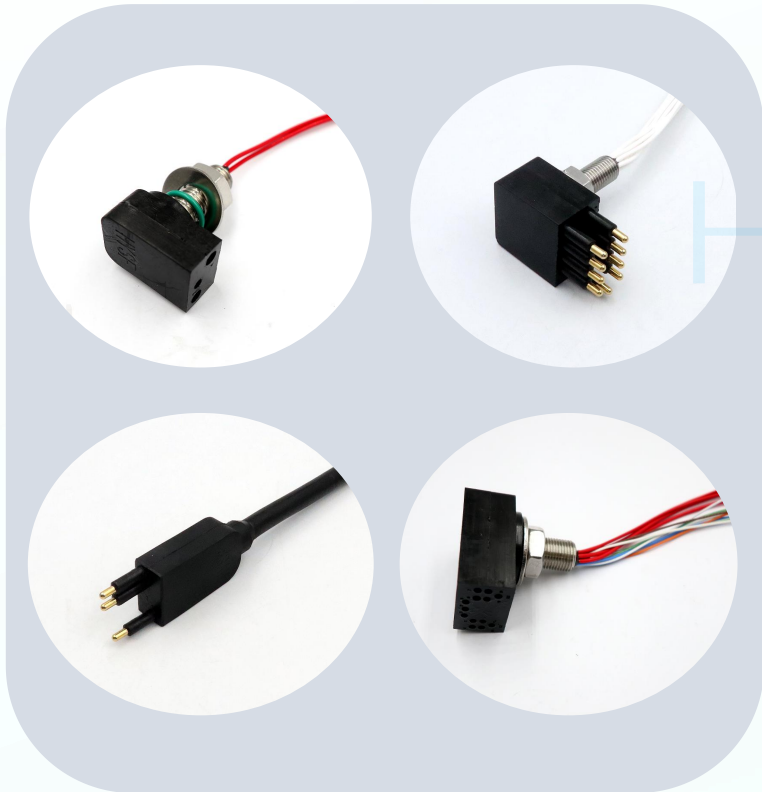


Product Series	BH 2-5 Pins	SKU:	BH	Mounting Thread	7/16-20UNF
	BH6-12 Pins		BH		5/8-18UNF
	BH12 Pins , 16 Pins		BH		3/4-16UNF
Rated Voltage	550 (V)AC/DC	Rated Current:	10A	Pressure Rating	60MPa
Insulation Resistance	≥1000V 200MΩ	Operating Temp.	-60-80°C	Mating Cycles	≥500次
Standard Kit	Bulkhead Connector: 316L Stainless Steel (30cm pigtail, includes Nut/Washer/O-ring) Cable Plug: 90cm-1m cable length				

05 Flat Series Watertight Connectors



The Flat Series Watertight Connectors feature a low-profile, space-saving design ideal for applications where vertical clearance is limited. These connectors provide reliable high-density connectivity while maintaining the same rugged pressure and corrosion resistance as standard circular models.



Product Series	Standard Flat 2–9 Pins	SKU:	SFLP	Mounting Thread	7/16-20UNF
	Micro Flat 7-Pin / 9-Pin		SFMCLP		7/16-20UNF
	Gigabit Ethernet Flat 13-Pin		SFDLP		1/2-20UNF
Rated Voltage	550 (V)AC/DC	Rated Current:	Standard 2–9 Pins (10A) Micro 7-Pin / 9-Pin (5A)	Pressure Rating	60MPa
Insulation Resistance	≥1000V 200MΩ	Operating Temp.	-60-80°C	Mating Cycles	≥500次
Standard Kit	Bulkhead Connector: 316L Stainless Steel (30cm pigtail, includes Nut/Washer/O-ring) Cable Plug: 90cm–1m cable length				

06 High-Current Watertight Connectors



This series is a flagship product independently developed by our company, featuring a compact footprint paired with high-current carrying capacity. The cable and metal contacts are integrated through a high-temperature vulcanization process to create a robust, one-piece molded structure that supports reliable wet-mating.



Product Series	High-Current 2-4 Pins	SKU:	SFCON	Mounting Thread	1/2-20UNF
	High-Current 2-4 Pins		SFCONRA		1/2-20UNF
	High-Current 9 Pins		SFMCBH		1/2-20UNF
Rated Voltage	550 (V)AC/DC	Rated Current:	High-Current 2-4 Pins (25A) High-Current 9-Pin (2A-5A)	Pressure Rating	60MPa
Insulation Resistance	≥1000V 200MΩ	Operating Temp.	-60-80°C	Mating Cycles	≥500次
Standard Kit	Bulkhead Connector: 316L Stainless Steel (30cm pigtail, includes Nut/Washer/O-ring) Cable Plug: 90cm-1m cable length				

06 High-Current Watertight Connectors



The High-Current Watertight Connector Series is a proprietary solution independently developed by our company, offering a compact design with high-amperage load capacity. The cable and contacts are integrated through high-temperature vulcanization, creating a rugged, one-piece molded structure that supports wet-mating in demanding subsea environments.



Product Series	High-Current 2–6 Pins	SKU:	SFCOE	Mounting Thread	5/8-18UNF
Rated Voltage	550 (V)AC/DC	Rated Current:	25A/30A	Pressure Rating	60MPa
Insulation Resistance	≥1000V 200MΩ	Operating Temp.	-60-80°C	Mating Cycles	≥500次
Standard Kit	Bulkhead Connector: 316L Stainless Steel (30cm pigtail, includes Nut/Washer/O-ring) Cable Plug: 90cm–1m cable length				

06 High-Current Watertight Connectors



Our High-Current Watertight Connectors are engineered with an expanded terminal contact surface area to support significantly higher amperage loads. These connectors support wet-mating, providing reliable high-voltage power connectivity in the most demanding marine environments.



Product Series	High-Current 4-Pin / 6-Pin Series	SKU:	SFCOD	Mounting Thread	3/4-16UNF
Rated Voltage	550 (V)AC/DC	Rated Current:	40A	Pressure Rating	60MPa
Insulation Resistance	≥1000V 200MΩ	Operating Temp.	-60-80°C	Mating Cycles	≥500次
Standard Kit	Bulkhead Connector: 316L Stainless Steel (30cm pigtail, includes Nut/Washer/O-ring) Cable Plug: 90cm–1m cable length				

07 High-Power Watertight Connectors



The High-Power Watertight Connector Series serves as the critical hub between subsea composite cables and equipment. Engineered for high-voltage power transmission and data exchange in deep-sea environments, these connectors are optimized for underwater thrusters, ROVs (Remotely Operated Vehicles), and subsea lighting systems. They feature a rapid wet-mating capability that significantly reduces operational downtime and failure rates.



Product Series	High-Power 4-Pin / 6-Pin Series	SKU:	SFHP	Mounting Thread	1-14UNS
Rated Voltage	550 (V)AC/DC	Rated Current:	60A	Pressure Rating	60MPa
Insulation Resistance	≥1000V 200MΩ	Operating Temp.	-60-80°C	Mating Cycles	≥500次
Standard Kit	Bulkhead Connector: 316L Stainless Steel (30cm pigtail, includes Nut/Washer/O-ring) Cable Plug: 90cm–1m cable length				

07 High-Power Single-Pin Watertight Connector



The High-Power Single-Pin Watertight Connector is an independently developed solution featuring an expanded terminal contact surface area for enhanced stability and performance. Specifically designed for high-voltage power transmission and data exchange in deep-sea environments, it is ideally suited for submarines, ROVs (Remotely Operated Vehicles), and underwater lighting systems. Its rapid wet-mating capability significantly reduces operational failure rates.



Product Series	High-Power Single-Pin Series	SKU:	SFHPDX	Mounting Thread	7/8-14UNF
Rated Voltage	550 (V)AC/DC	Rated Current:	150A/180A/250A	Pressure Rating	60MPa
Insulation Resistance	≥1000V 200MΩ	Operating Temp.	-60-80°C	Mating Cycles	≥500次
Standard Kit	Bulkhead Connector: 316L Stainless Steel (30cm pigtail, includes Nut/Washer/O-ring) Cable Plug: 90cm–1m cable length				

07 High-Power Watertight Connectors



The High-Power 150A Connector is an independently developed product engineered for high-capacity power and signal transmission in the most demanding environments. With its exceptional load-bearing capability and specialized design, it is specifically built to meet the rigorous power supply requirements of heavy-duty subsea equipment.



Product Series	High-Power 4-Pin / 6-Pin Series	SKU:	SFHPCD	Mounting Thread	2-3/8-12UNF
Rated Voltage	550 (V)AC/DC	Rated Current:	150A/180A/250A	Pressure Rating	60MPa
Insulation Resistance	≥1000V 200MΩ	Operating Temp.	-60-80°C	Mating Cycles	≥500次
Standard Kit	Bulkhead Connector: 316L Stainless Steel (30cm pigtail, includes Nut/Washer/O-ring) Cable Plug: 90cm–1m cable length				



08 Leaf/Petal Series Watertight Connectors

The Leaf/Petal Series Watertight Connector is an independently developed solution that functions similarly to a Y-cable splitter. The bulkhead base acts as an integrated junction box, offering the primary advantage of effortless mating and unmating for high-efficiency operations. It is specifically designed for scenarios requiring frequent disconnection, routine maintenance, or emergency breakaway capabilities.



Product Series	8-Pin (4-Leaf/Petal) 12-Pin (2-Leaf/Petal) 16-Pin (8-Leaf/Petal) 24-Pin (2-Leaf/Petal) 24-Pin (3-Leaf/Petal) 24-Pin (6-Leaf/Petal) 24-Pin (12-Leaf/Petal) 32-Pin (4-Leaf/Petal) (10A)	SKU:	SFAW	Mounting Thread	1-14UNS
	36-Pin (3-Leaf/Petal) 36-Pin (6-Leaf/Petal) 42-Pin (6-Leaf/Petal) 48-Pin (6-Leaf/Petal) (5A)				
Rated Voltage	550 (V)AC/DC	Rated Current:	5A/10A	Pressure Rating	60MPa
Insulation Resistance	≥1000V 200MΩ	Operating Temp.	-60-80°C	Mating Cycles	≥500次
Standard Kit	Bulkhead Connector: 316L Stainless Steel (30cm pigtail, includes Nut/Washer/O-ring) Cable Plug: 90cm–1m cable length				

09 Gigabit Ethernet Series Watertight Connectors



The Gigabit Ethernet Watertight Connector Series is specifically engineered for high-speed data transmission, fully supporting standard Ethernet protocols with transfer rates reaching Gigabit (1000 Mbps) levels. This series is designed to meet the rigorous demands of underwater equipment for high-speed data interaction, making it the ideal solution for real-time monitoring and High-Definition (HD) video transmission.



Product Series	Gigabit Ethernet 8-Pin Series	SKU:	SFMCDBH	Mounting Thread	7/16-20UNF
	Gigabit Ethernet 10–16 Pin Series		SFDBH		1/2-20UNF
	Gigabit Ethernet Flat 13-Pin Series		SFDLP		1/2-20UNF
Rated Voltage	550 (V)AC/DC	Rated Current:	2A	Pressure Rating	60MPa
Insulation Resistance	≥1000V 200MΩ	Operating Temp.	-60-80°C	Mating Cycles	≥500次
Standard Kit	Bulkhead Connector: 316L Stainless Steel (30cm pigtail, includes Nut/Washer/O-ring) Cable Plug: 90cm–1m cable length				

10 Coaxial Series Watertight Connectors



The Coaxial Watertight Connector Series is a specialized sealed interface designed for subsea Radio Frequency (RF) signal transmission. Combining superior waterproofing and pressure resistance with high-frequency performance, it is widely utilized in underwater communications, sonar systems, and marine observation. This series supports stable RF signal interaction for devices such as underwater antennas and hydrophones, ensuring real-time reliability for subsea communication and data acquisition.



Product Series	50-3、50-5、75-3	SKU:	SFMFTZ	Mounting Thread	7/16-20UNF
	50-3、50-5、75-3		SFTZ		1/2-20UNF
	6-Pin Power + Coaxial (75-3) Series		SFHFTZ		1/2-20UNF
Rated Voltage	550 (V)AC/DC	Rated Current		Pressure Rating	60MPa
Signal Frequency		VSWR		Return Loss	
Insulation Resistance	≥1000V 200MΩ	Operating Temp.	-60-80°C	Mating Cycles	≥500次
Standard Kit	Bulkhead Connector: 316L Stainless Steel (30cm pigtail, includes Nut/Washer/O-ring) Cable Plug: 90cm–1m cable length				



11 Bulkhead Series Watertight Connectors

The Bulkhead Series Watertight Connector is an independently developed, cost-effective solution designed to streamline subsea connectivity. Available with either straight-plug or right-angle (L-type) options, this series enables a direct connection between internal and external equipment. By replacing traditional plug-and-receptacle assemblies, it significantly simplifies wiring architecture and reduces overall system complexity.



Product Series	Micro Bulkhead Connector	SKU:	SFMCCSTA	Mounting Thread	7/16-20UNF
	Bulkhead Connector		SFCCSTA1/2/3		7/16-20UNF
	Right Angle Bulkhead Connector		SFCCRA1/2/3		1/2-20UNF 5/8-18UNF
Rated Voltage	550 (V)AC/DC	Rated Current:	5A-30A	Pressure Rating	60MPa
Insulation Resistance	≥1000V 200MΩ	Operating Temp.	-60-80°C	Mating Cycles	≥500次
Standard Kit	Bulkhead Connector: 316L Stainless Steel (30cm pigtail, includes Nut/Washer/O-ring) Cable Plug: 90cm–1m cable length				

12 Right-Angle (L-Type) Watertight Connectors

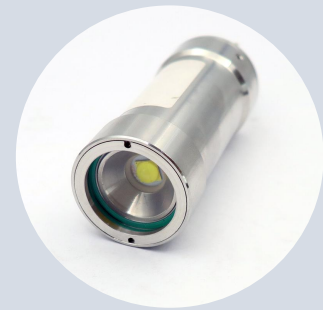


The L-Type Cable is an independently developed product designed specifically for its unique physical and functional architecture. It is the ideal solution for installation requirements in specialized environments, enabling precise directional cable routing and secure fixation within confined or narrow spaces.



Product Series	L-Type Watertight Cable Micro 2–8 Pin Series	SKU:	MCILRA	Mounting Thread	7/16-20UNF
	Micro 10–16 Pin Series		MCILRA		1/2-20UNF
	Standard 2–5 Pin Series		ILRA		7/16-20UNF
	Standard 6–12 Pin Series		ILRA		5/8-18UNF
	High-Current 2–6 Pin Series		SFCOEILRA		5/8-18UNF
	High-Power 4-Pin / 6-Pin Series		SFHPIILRA		1-14UNS
Rated Voltage	550 (V)AC/DC	Rated Current:	5A-60A	Pressure Rating	60MPa

13 Subsea Monitoring Equipment (Lighting & Cameras)



Product Photos



Marine Buoyancy
Sphere / Float



Double-Ended
Watertight Cable



Marine Cable /
Tether



RMG Cable / RMG
Series Connector



HPHT Bulkhead
Penetrator



Marine Bronze
Receptacle / Base



Cable Grip / Strain Relief



Custom Coaxial
Spiral/Coiled Cable



Flange Mounting

OUR TEAM

