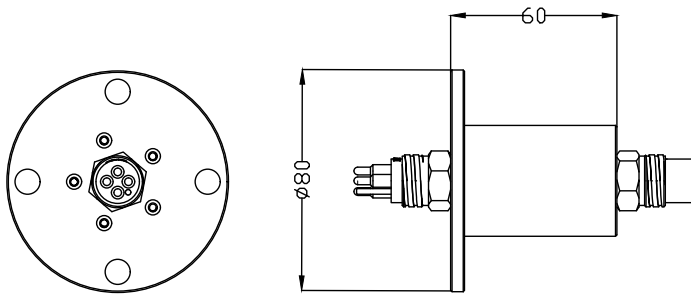


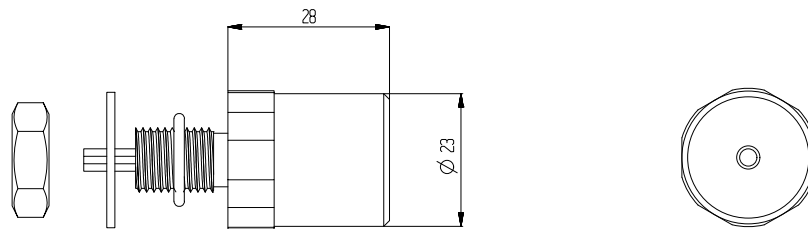
Underwater connector junction box



Material: 316L

Customizable according to requirements

Pressure sensor



Pressure sensor

Main parameters:

Range: 0~50MPa

Power supply: 5V DC

Output value: 0~5V

Working temperature: -40° ~ +80° C

Material parameters:

Plug body: chloroprene rubber

Socket body: 316L stainless steel,

titanium alloySea copper

Needle core: Copper plated with gold

Installation requirements:

Installation radius: 18

Surface smoothness: Ra1.6

Dimensions in millimeters

Installation thread:

7/16-20UNF-2A

Thread length: 16mm