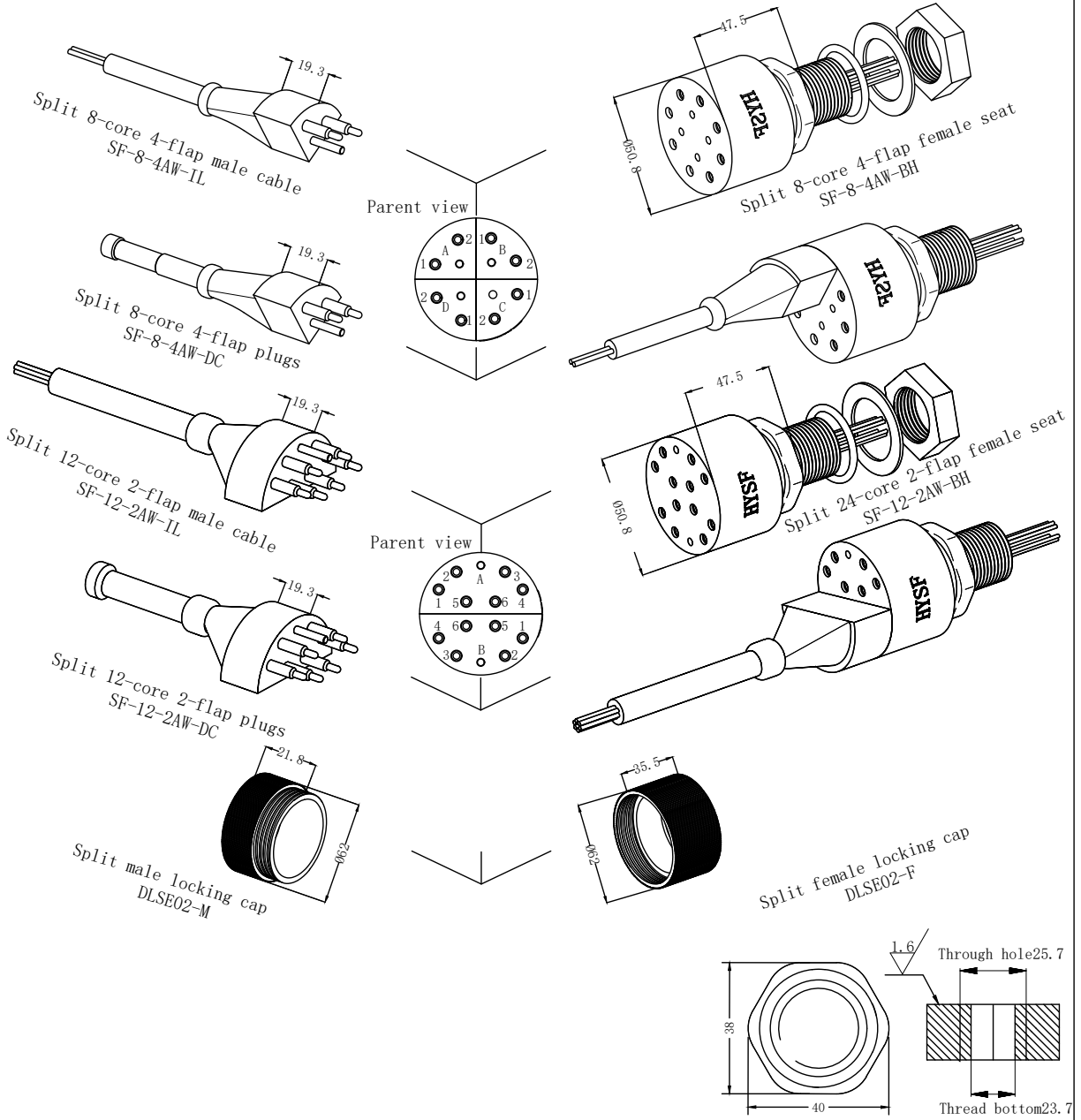
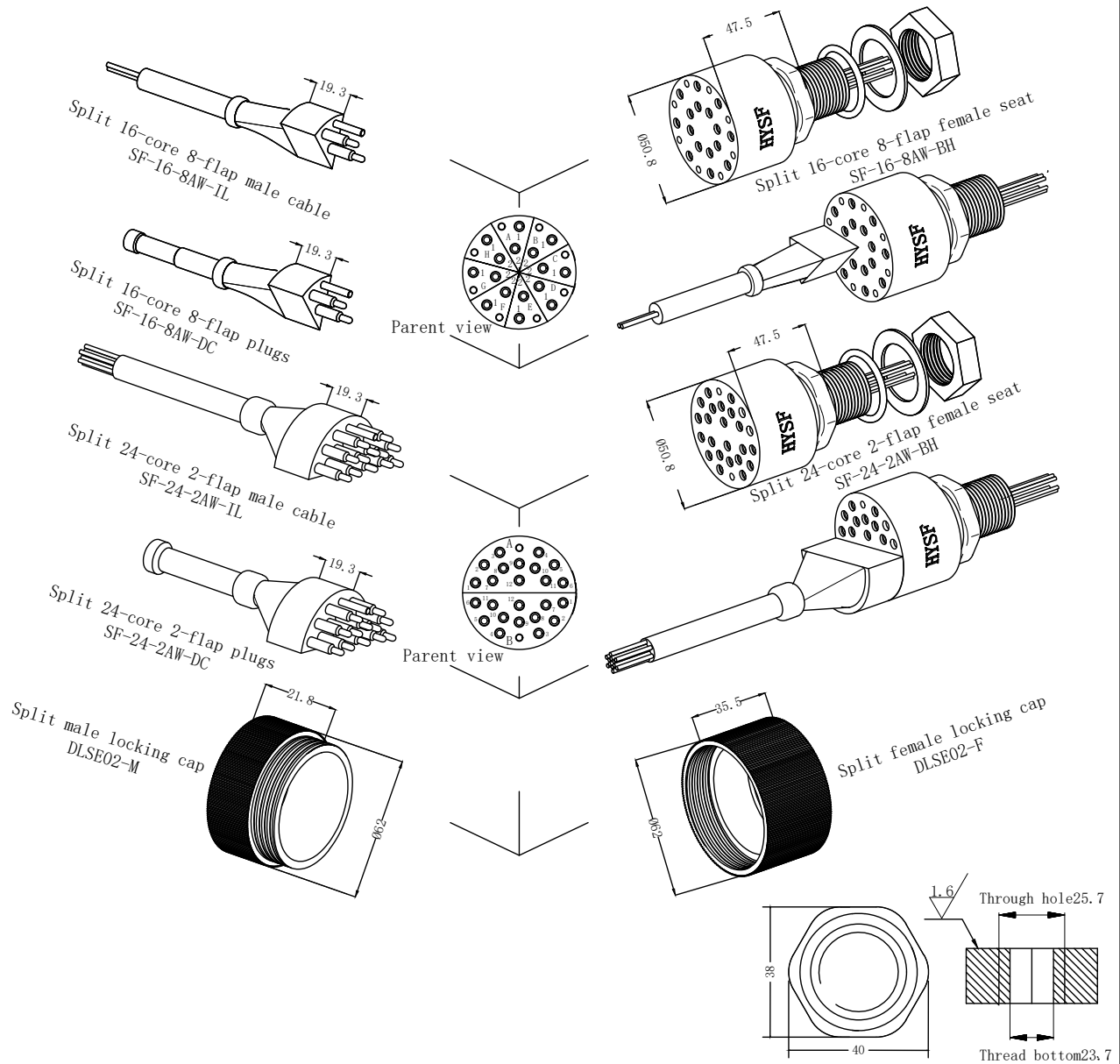


Split 8-core 4-flap 12-core 2-flap



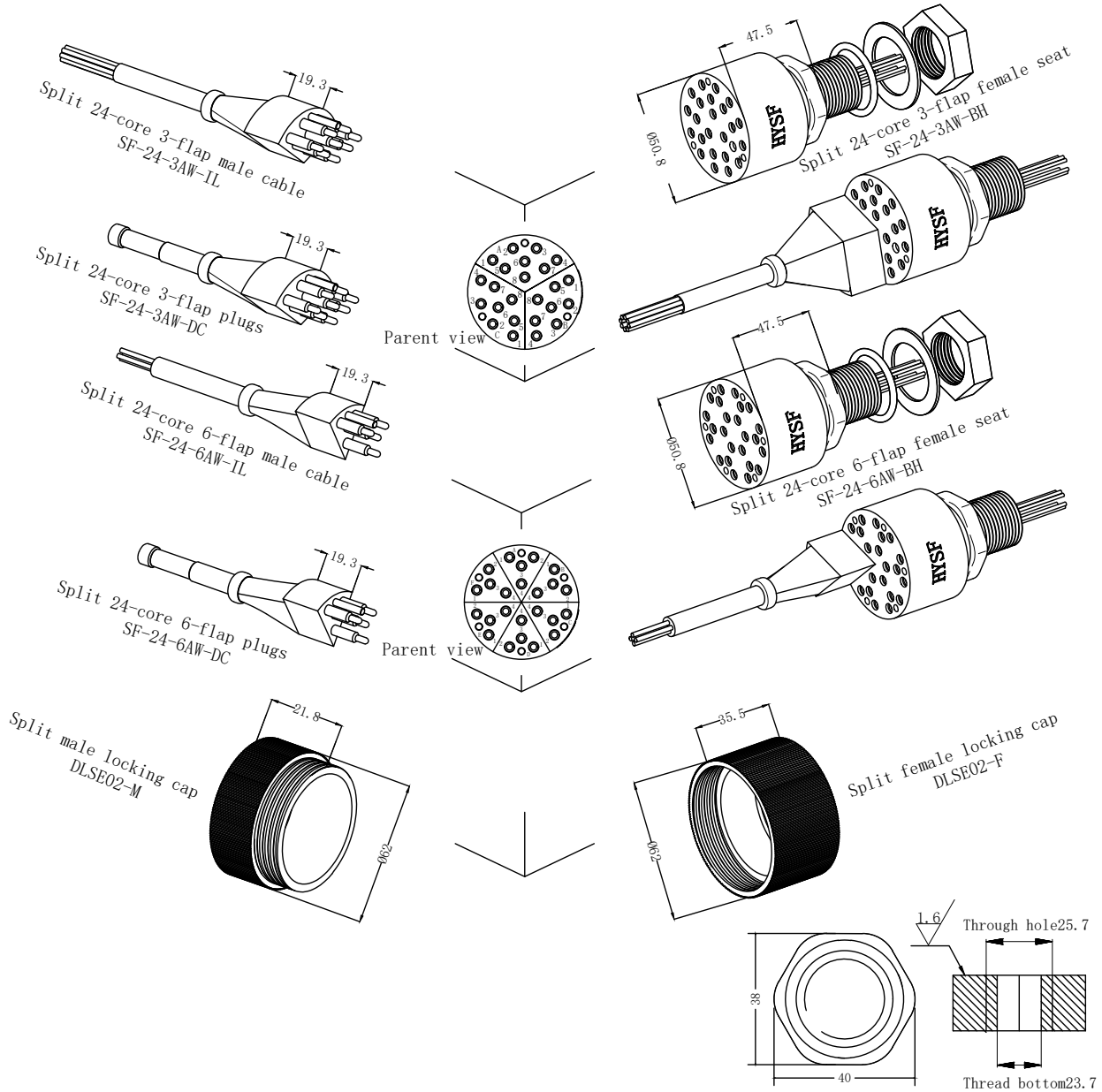
<p>Split into 8 cores and 4 petals: 1: Red 2: Black 3: Yellow 4: Blue 5: Orange 6: Brown 7: Purple 8: Green</p> <p>Divided into 12 cores and 2 petals: 1: Red 2: Black 3: Yellow 4: Blue 5: Orange 6: Brown</p>	<p>Main parameters:</p> <p>Electrical parameters : 550V @ 10A Insulation resistance: >200 MΩ contact resistance: <0.01Ω Wet plug and pull times: >500次 Operating temperature:-60° ~+80° C Working depth: 6000M(60 MPa)</p>	<p>Material parameters:</p> <p>Plug body: Neoprene Socket body: Neoprene Cable body: Polyurethane, Neoprene Needle core: Copper gilding</p> <p>Installation requirements: Installation radius: 32.5 Surface finish: Ra1.6</p>	<p>Dimension units: millimeter Thread unit: inch Mounting thread: 1-14UNS-2A Thread length: 25mm</p> <p>Can be customized upon request</p>
---	---	---	--

Split 16-core 8-flap 24-core 2-flap



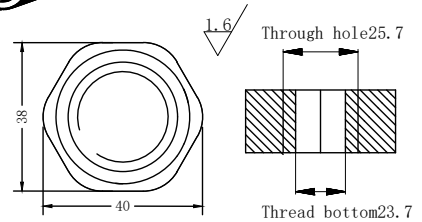
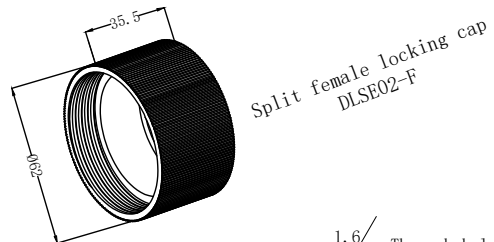
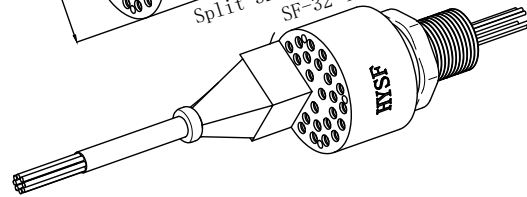
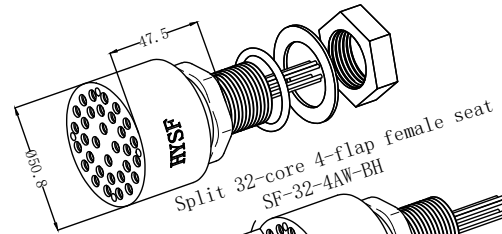
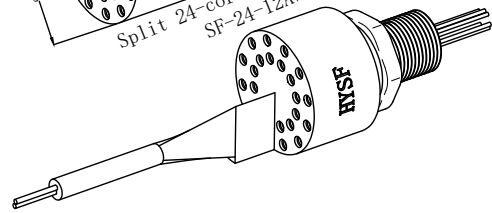
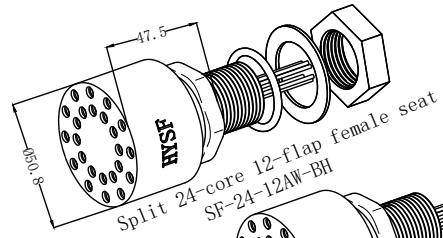
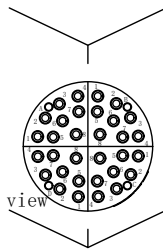
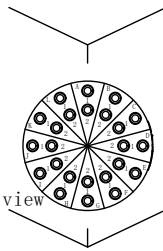
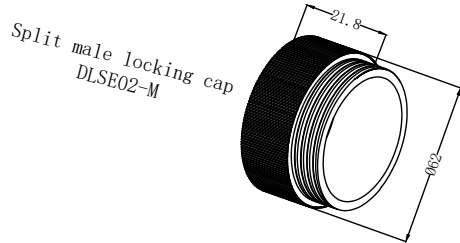
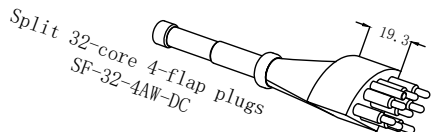
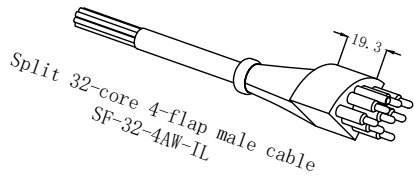
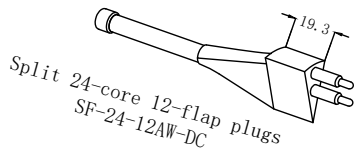
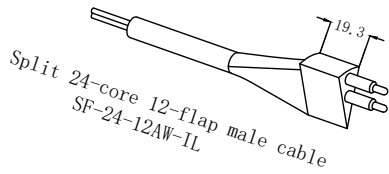
	<p>Main parameters:</p> <p>Electrical parameters : 550V @ 10A Insulation resistance: >200 MΩ contact resistance: <0.01 Ω Wet plug and pull times: >500次 Operating temperature: -60° ~ +80° C Working depth: 6000M(60 MPa)</p>	<p>Material parameters:</p> <p>Plug body: Neoprene Socket body: Neoprene Cable body: Polyurethane、Neoprene Needle core: Copper gilding</p> <p>Installation requirements: Installation radius: 32.5 Surface finish: Ra1.6</p>	<p>Dimension units: millimeter Thread unit: inch Mounting thread: 1-14UNS-2A Thread length: 25mm</p> <p>Can be customized upon request</p>
--	--	---	---

Split 24-core 3-flap 24-core 6-flap



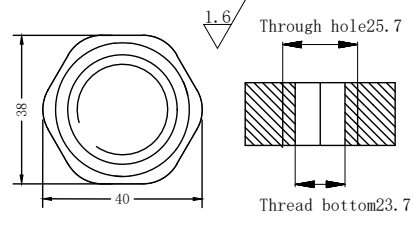
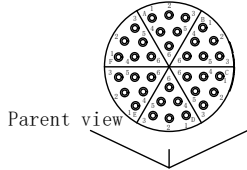
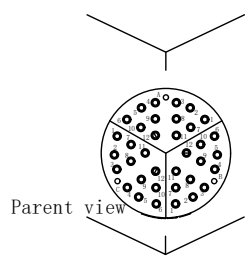
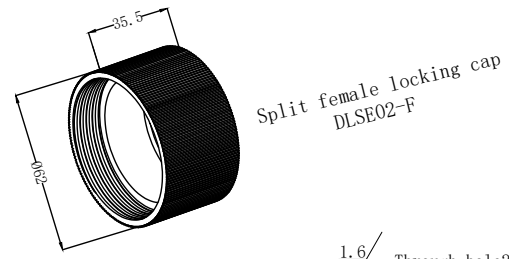
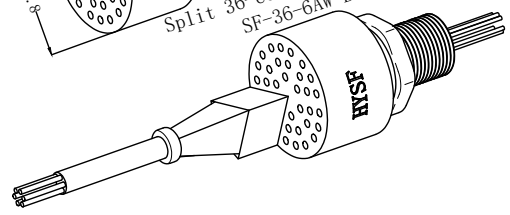
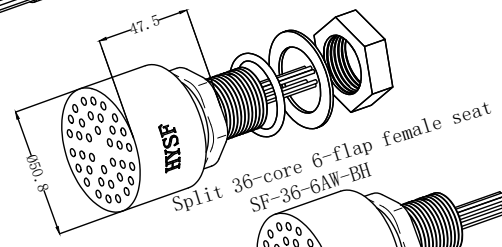
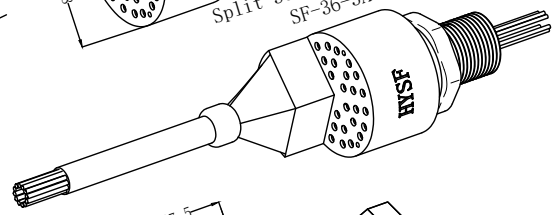
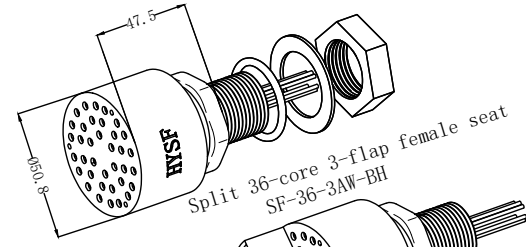
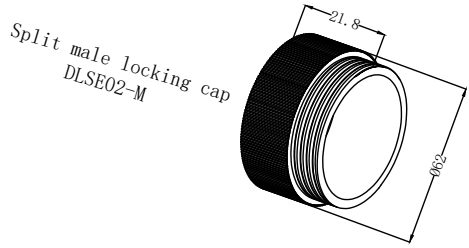
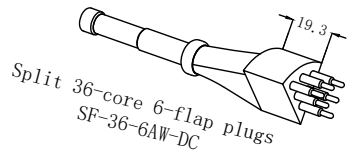
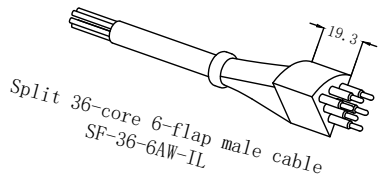
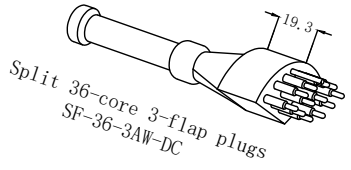
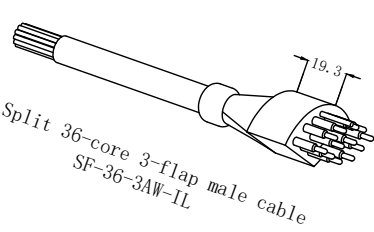
<p>Split into 24 cores and 3 petals: 1: Red 2: Black 3: Yellow 4: Blue 5: Orange 6: Brown 7: Purple 8: Green Divided into 24 cores and 2 petals: 1: Red 2: Red and White 3: Black 4: Black and White 5: Yellow 6: Yellow White 7: Blue 8: Blue White 9: Orange 10: Orange White 11: Brown 12: Brown White</p>	<p>Main parameters: Electrical parameters : 550V @ 10A Insulation resistance: >200 MΩ contact resistance: <0.01 Ω Wet plug and pull times: >500次 Operating temperature:-60° ~+80° C Working depth: 6000M(60 MPa)</p>	<p>Material parameters: Plug body: Neoprene Socket body: Neoprene Cable body: Polyurethane、Neoprene Needle core: Copper gilding Installation requirements: Installation radius: 32.5 Surface finish: Ra1.6</p>	<p>Dimension units: millimeter Thread unit: inch Mounting thread: 1-14UNS-2A Thread length: 25mm Can be customized upon request</p>
---	--	---	---

Split 24-core 12-flap 32-core 4-flap



<p>Divided into 24 cores and 6 petals: 1: Red 2: Black 3: Brown 4: Blue</p> <p>Divided into 24 cores and 12 petals: 1: Red 2: Black</p>	<p>Main parameters:</p> <p>Electrical parameters : 550V @ 10A Insulation resistance: >200 MΩ contact resistance: <0.01 Ω Wet plug and pull times: >500次 Operating temperature: -60° ~ +80° C Working depth: 6000M(60 MPa)</p>	<p>Material parameters:</p> <p>Plug body: Neoprene Socket body: Neoprene Cable body: Polyurethane、Neoprene Needle core: Copper gilding</p> <p>Installation requirements: Installation radius: 32.5 Surface finish: Ra1.6</p>	<p>Dimension units: millimeter Thread unit: inch Mounting thread: 1-14UNS-2A Thread length: 25mm</p> <p>Can be customized upon request</p>
---	--	--	--

Split 36-core 3-flap 36-core 6-flap



Divided into 36 cores and 3 petals:
1: Red 2: Red and White 3: Black 4: Black and White 5: Yellow 6: Yellow White 7: Blue 8: Blue White 9: Orange 10: Orange White 11: Brown 12: Brown White

Divided into 32 cores and 4 petals:
1: Red 2: Black 3: Yellow 4: Blue 5: Orange 6: Brown 7: Purple 8: Green

Main parameters:
Electrical parameters : 550V @ 5A
Insulation resistance: >200 MΩ
contact resistance: <0.01Ω
Wet plug and pull times: >500次
Operating temperature: -60° ~ +80° C
Working depth: 6000M(60 MPa)

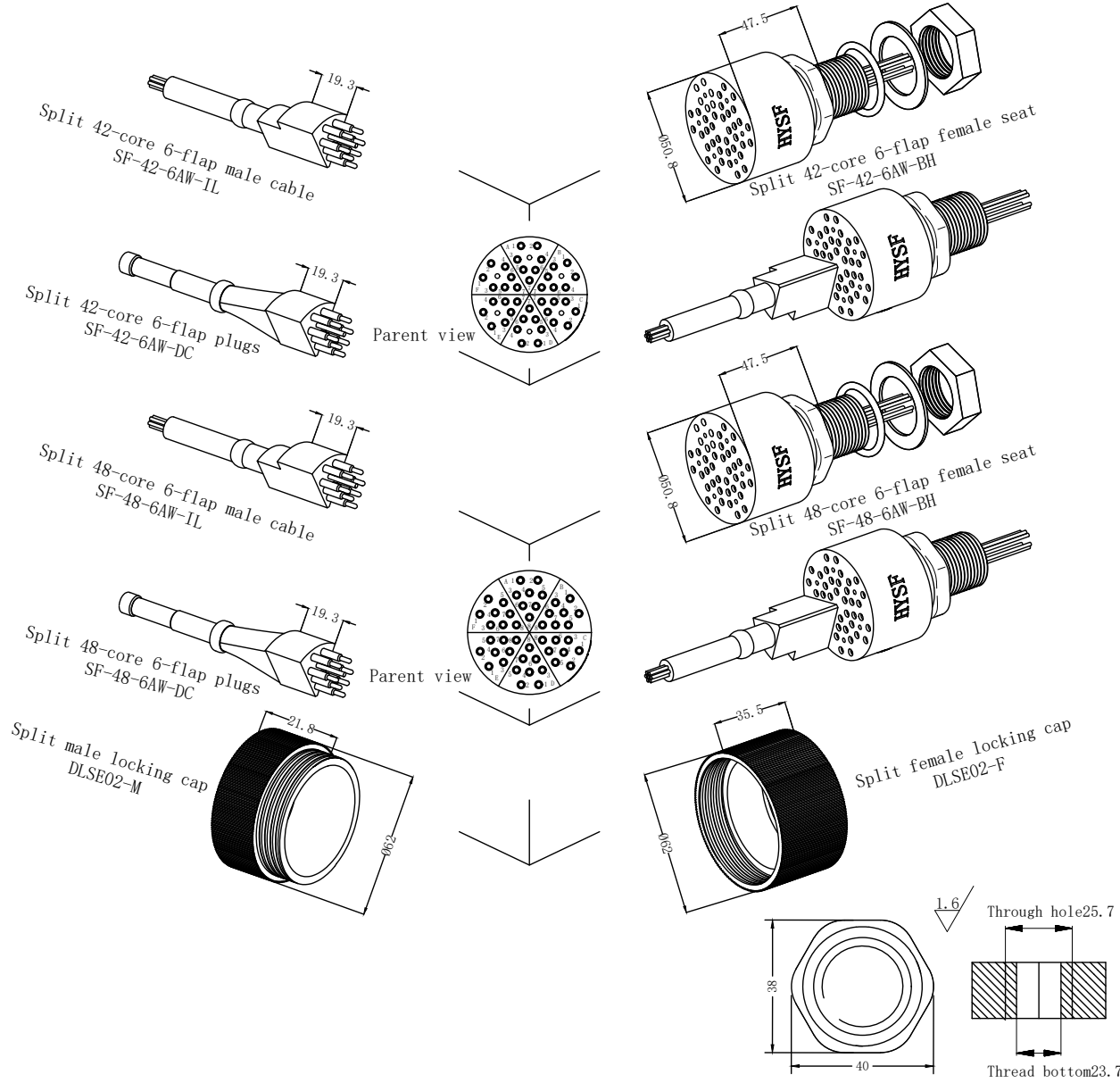
Material parameters:
Plug body: Neoprene
Socket body: Neoprene
Cable body: Polyurethane, Neoprene
Needle core: Copper gilding

Installation requirements:
Installation radius: 32.5
Surface finish: Ra1.6

Dimension units: millimeter
Thread unit: inch
Mounting thread: 1-14UNS-2A
Thread length: 25mm

Can be customized upon request

Split 42-core 6-flap 48-core 6-flap



<p>Divided into 36 cores and 6 petals: 1: Red 2: Black 3: Yellow 4: Blue 5: Orange 6: Brown</p> <p>Divided into 42 cores and 6 petals: 1: Red 2: Black 3: Yellow 4: Blue 5: Orange 6: Brown 7: Purple</p>	<p>Main parameters:</p> <p>Electrical parameters : 550V @ 5A Insulation resistance: >200 MΩ contact resistance: <0.01 Ω Wet plug and pull times: >500次 Operating temperature: -60° ~ +80° C Working depth: 6000M(60 MPa)</p>	<p>Material parameters:</p> <p>Plug body: Neoprene Socket body: Neoprene Cable body: Polyurethane、Neoprene Needle core: Copper gilding</p> <p>Installation requirements: Installation radius: 32.5 Surface finish: Ra1.6</p>	<p>Dimension units: millimeter Thread unit: inch Mounting thread: 1-14UNS-2A Thread length: 25mm</p> <p>Can be customized upon request</p>
---	---	--	--